

Employment initiatives supporting 25+ NEETs

COUNTRY REPORT – CZECH REPUBLIC

Petr Fanta, Martin Pělucha, Jana Kouřilová, Martina Kubíková, Vojtěch Dvořák

2022

IN THE FRAMEWORK OF THE PROJECT ‘LOST
MILLENNIALS – TRANSNATIONAL RESEARCH
NETWORK FOR THE EVALUATION OF INITIATIVES
TARGETING 25+ NEETS’

Please cite as: Fanta, P., Pělucha, M., Kouřilová, J., Kubíková, M., Dvořák, V. (2022) Employment initiatives supporting 25+ NEETs. Country Report – The Czech Republic. Institute for Structural Policy. Lost Millennials – Transnational Research Network for the Evaluation of Initiatives Targeting 25+ NEETs. Available at <https://lostmillennials.eu>

Project summary:

The project ‘Lost Millennials’ focuses on a regularly neglected group of the generation of Millennials: young people aged 25-29 neither in employment or education and training (25+ NEETs). This generation started their working life shortly after the economic crisis of 2008, perceiving uncertainty and lack of security for work and well-being, they are more likely to be inactive or in precarious jobs. The main objective of the project is to contribute to the successful integration of 25+ NEETs to the labour market through increasing knowledge on the effects of employment initiatives on 25+ NEETs, building capacity of stakeholders to perform impact studies and thus improving the quality of labour market interventions. This objective will be achieved through the creation of the transnational research network which will share know-how and good practices, the evaluations of governmental and community-based initiatives targeting 25+ NEETs, as well as the engagement of stakeholders to increase the policy-relevance of project results.

For more information, please visit our [website](#), contact us on lm.leadpartner@hetfa.hu and follow our social media ([Facebook](#), [LinkedIn](#)).

The Lost Millennials project is funded by Iceland, Liechtenstein and Norway through the EEA and Norway Grants Fund for Youth Employment.

Implemented by:



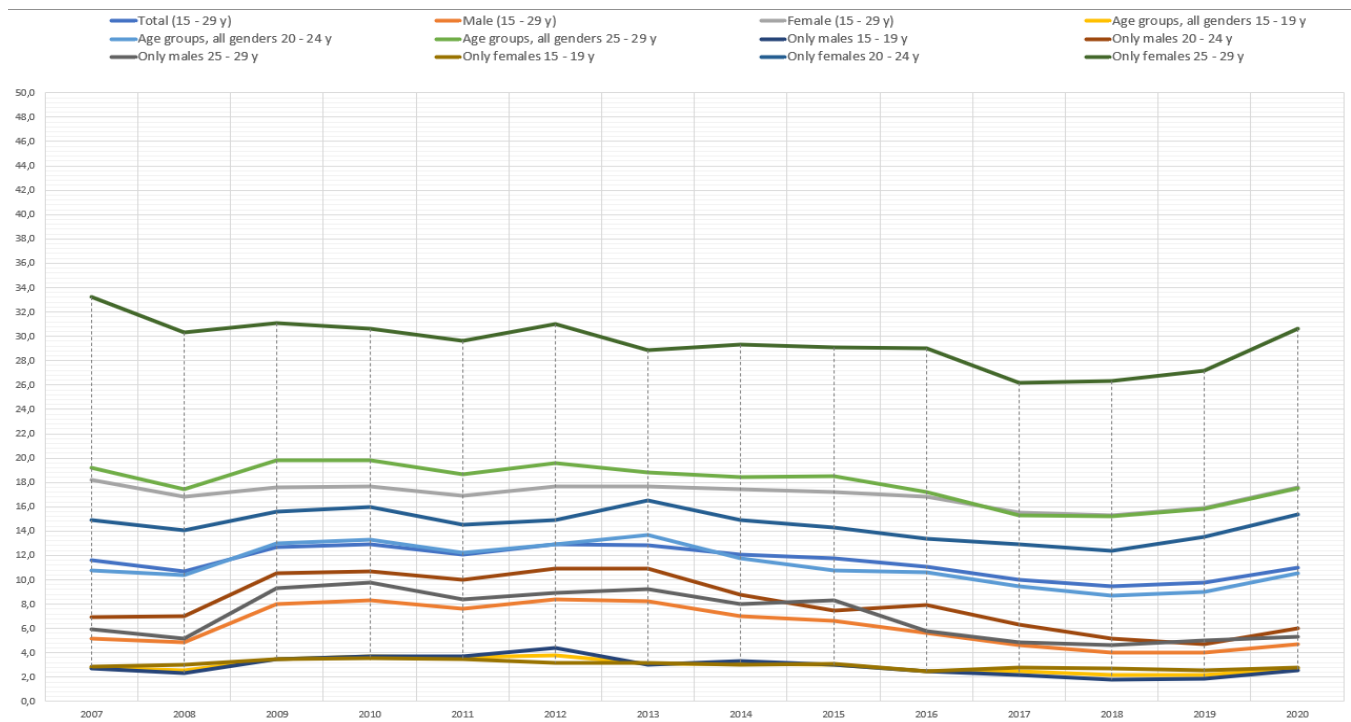
Table of Contents

1. Introduction	2
2. Institutional context of initiatives and programmes	3
3. Focus of initiatives/programmes.....	10
3.1 Typology of initiatives/programmes and their supported activities	10
3.2 Geographic coverage of NEETs support	11
4. Financial aspects of initiatives and programmes	11
5. Implementation of initiatives and programmes	13
5.1 Project implementers	13
5.2 Target groups of NEETs	16
6. Conclusions	19
7. References	20

1. Introduction

The situation of 25+ NEETs in the Czech Republic is not difficult. Their numbers are not high. Therefore, it might lead to a conclusion that programmes, projects, and initiatives will not target them. However, the reality is different. The Czech Republic and its policies have been working with this group mainly in the EU programming period 2014-2020. In last two EU programming periods, the group of people aged 25-29 has been classified as ‘youth’ covering people from 18 to 30 years. Since 2007 there has been a slight oscillation in the number of 25+ NEETs, but there has not been a significant change in this number.

Graph 1: Youth unemployment in the Czech Republic, by age and sex



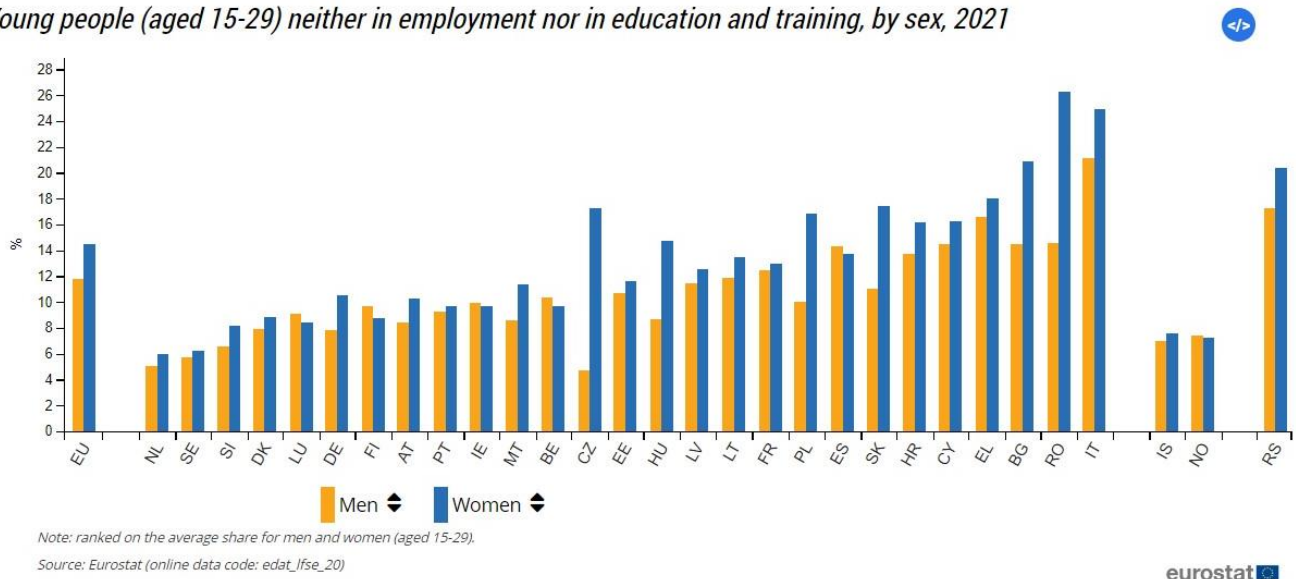
Source: EUROSTAT database

The situation of 25+ NEETs varies widely across the Czech Republic. The numbers are generally low compared to the EU average (European Commission, 2022). However, there are some regions in the Czech Republic with significantly higher numbers of 25+ NEETs. These are the so-called ‘coal regions’ (Karlovy Vary, Ústí nad Labem and Moravian-Silesian regions). These regions have been dominated by heavy industry and coal mining for a long period. However, these sectors are gradually declining, and the regions are thus undergoing significant structural changes, which are also characterised by increased levels of unemployment (DotaceEU, 2022).

In the Czech Republic, the gender gap is evident in the statistics, whereas the gap is primarily caused by motherhood. Maternity in the Czech Republic is associated with extended maternity leave (the length of which is optional but can reach up to 4 years) (EURAXESS Czech Republic). The persons on maternity leave (there is also the possibility of paternity leave but it is not widely used) are recorded as 25+ NEETs. When correcting the numbers of usually women taking advantage of a temporary and state supported maternity leave, the numbers shown for women in the Graph 2 would be approximately the same as in case of men indicating very small gender gap.

Graph 2: Young people (aged 15-29) NEET, by sex, 2021

Young people (aged 15-29) neither in employment nor in education and training, by sex, 2021



Source: European Commission – Statistics on young people neither in employment nor in education or training

2. Institutional context of initiatives and programmes

The most prominent actor in the field of 25+ NEETs activities in the Czech Republic is the Ministry of Labour and Social Affairs. The administrative office of the Ministry of Labour and Social Affairs – the Labour Office and its regional branches also play a significant role in this area. The roles are divided among them in the vast majority of projects: Managing authority: MoSLA; Implementer: Labour Office. These two actors are indeed key in the Czech Republic. Apart from them, there are some activities of other actors, but these cannot compete with the massive MoSLA projects in terms of budget and content.

In the context of the situation of the 25+ NEETs in the Czech Republic, the activities can be considered sufficient, also considering that in the mentioned 'coal regions', the national activities are reinforced by additional support programmes specifically for these disadvantaged regions.

It should also be mentioned that most of these activities are financed mainly by EU funds, especially the ESF. It is an estimation of the research team that most of these activities would not occur without this funding opportunity.

Initiatives supporting NEETs 25+ in the Czech Republic identified by the research team are listed further.

National level:

- Housing First (*Bydlení především*)
 - Managing authority: MoSLA
 - <https://www.esfcr.cz/vyzva-108-opz>
- A coordinated approach to socially excluded localities (*Koordinovaný přístup k sociálně vyloučeným lokalitám*)
 - Managing authority: MoSLA
 - https://www.esfcr.cz/prehled-vyzev-opz/-/asset_publisher/eM7NGkQLScRc/content/koordinovany-pristup-k-socialne-vyloucenym-lokalitam-kpsvl-1-vyzva?redirect=%2Fkoordinovany-pristup-k-vyloucenym-lokalitam
- International mobility and social inclusion of disadvantaged youth (*Mezinárodní mobilita a sociální začleňování znevýhodněné mládeže*)
 - Managing authority: MoSLA
 - <https://www.esfcr.cz/documents/21802/803267/Text+výzvy+č.+032+OPZ/76af98d9-8cd0-4fc2-8a42-4711c81eee85>
- International mobility for disadvantaged youth (*Mezinárodní mobilita pro znevýhodněnou mládež*)
 - Managing authority: MoSLA
 - <https://www.esfcr.cz/documents/21802/803267/Text+výzvy+č.+032+OPZ/76af98d9-8cd0-4fc2-8a42-4711c81eee85>
- Apprenticeships for young people under 30 (*Odborné praxe pro mladé do 30 let*)
 - Managing authority: MoSLA
 - <https://www.esfcr.cz/documents/21802/744634/Odborná+praxe+mladým+chybět+nemus%C3%AD.+Pomáhá+ministerstvo+a+Evropský+sociáln%C3%AD+fond/af901952-f376-4691-9aaa-a25427c700ee?version=1.0&t=1461917734717>
- New job opportunities (*Nové pracovní příležitosti*)
 - Managing authority: MoSLA

- https://www.esfcr.cz/projekty-opz/-/asset_publisher/ODuZumtPTtTa/content/nove-pracovni-prilezitosti?inheritRedirect=false
- Educate yourself for growth! – job opportunities (*Vzdělávejte se pro růst! – pracovní příležitosti*)
 - Managing authority: MoSLA
 - https://www.esfcr.cz/projekty-oplzz/-/asset_publisher/OvxsQYRpZsom/content/vzdelavejte-se-pro-rust-pracovni-prilezitos-1?inheritRedirect=false
- The Youth Guarantee (*Záruky pro mladé*)
 - Managing authority: MoSLA
 - <https://www.esfcr.cz/documents/21802/800248/Text+vývzy+č.+004+OPZ/ca9804fb-4a6d-44fb-902b-24b1cedf9bab>

Regional level:

Capital City of Prague

- Vocational practice for young people under 30 in Prague (*Odborné praxe pro mladé do 30 let v Praze*)
 - Managing authority: Labour Office of the Czech Republic, regional branch in Prague
 - https://www.esfcr.cz/projekty-oplzz/-/asset_publisher/OvxsQYRpZsom/content/odborne-praxe-pro-mlade-do-30-let-v-praze?inheritRedirect=false

South Bohemia Region

- Vocational practice for young people under 30 in South Bohemia Region (*Odborné praxe pro mladé do 30 let v Jihočeském kraji*)
 - Managing authority: Labour Office of the Czech Republic
 - https://www.esfcr.cz/projekty-oplzz/-/asset_publisher/OvxsQYRpZsom/content/odborne-praxe-pro-mlade-do-30-let-v-jihoceskem-kraji?inheritRedirect=false

Vysočina Region

- Vocational practice for young people under 30 in Vysočina Region (*Odborné praxe pro mladé do 30 let v Kraji Vysočina*)
 - Managing authority: Labour Office of the Czech Republic, regional branch in Jihlava
 - <https://esf2014.esfcr.cz/PublicPortal/Views/Projekty/Public/ProjektDetailPublicPage.aspx?action=get&datovySkladId=2E45FD41-3BA6-4EC2-A961-0FB8225B4509>

Kralovehradecký Region

- Vocational practice for young people under 30 in Hradec Králové Region (*Odborné praxe pro mladé do 30 let v Královehradeckém kraji*)

- Managing authority: Labour Office of the Czech Republic
- https://www.esfcr.cz/projekty-oplzz/-/asset_publisher/0vxsQYRpZsom/content/odborne-praxe-pro-mlade-do-30-let-v-kralovehradeckem-kraji?inheritRedirect=false

Liberec Region

- Vocational practice for young people under 30 in Liberec region (*Odborné praxe pro mladé do 30 let v Libereckém kraji*)
 - Managing authority: Labour Office of the Czech Republic
 - https://www.esfcr.cz/projekty-oplzz/-/asset_publisher/0vxsQYRpZsom/content/odborne-praxe-pro-mlade-do-30-let-v-libereckem-kraji?inheritRedirect=false

Olomouc Region

- Vocational practice for young people under 30 in Olomouc Region (*Odborné praxe pro mladé do 30 let v Olomouckém kraji*)
 - Managing authority: Labour Office of the Czech Republic, regional branch in Olomouc
 - https://www.esfcr.cz/projekty-oplzz/-/asset_publisher/0vxsQYRpZsom/content/odborne-praxe-pro-mlade-do-30-let-ve-zlinskem-kraji?inheritRedirect=false

Pilsen Region

- Vocational practice for young people under 30 in Pilsen Region (*Odborné praxe pro mladé do 30 let v Plzeňském kraji*)
 - Managing authority: Labour Office of the Czech Republic
 - https://www.esfcr.cz/projekty-oplzz/-/asset_publisher/0vxsQYRpZsom/content/odborne-praxe-pro-mlade-do-30-let-v-plzenskem-kraji?inheritRedirect=false

Zlín Region

- Vocational practice for young people under 30 in Zlín Region (*Odborné praxe pro mladé do 30 let ve Zlínském kraji*)
 - Managing authority: Labour Office of the Czech Republic, regional branch in Zlín
 - https://www.esfcr.cz/projekty-oplzz/-/asset_publisher/0vxsQYRpZsom/content/odborne-praxe-pro-mlade-do-30-let-ve-zlinskem-kraji?inheritRedirect=false

South Moravian Region

- Vocational practice for young people under 30 in South Moravian Region (*Odborné praxe pro mladé do 30 let v Jihomoravském kraji*)

- Managing authority: Labour Office of the Czech Republic, regional branch in České Budějovice
- <https://esf2014.esfcr.cz/PublicPortal/Views/Projekty/Public/ProjektDetailPublicPage.aspx?action=get&datovySkladId=1E37B60B-D24F-40C2-9C38-6D7E09DF61C2>
- Opportunity for young people under 30 (Příležitost pro mladé do 30 let)
 - Managing authority: Labour Office of the Czech Republic
 - https://www.esfcr.cz/projekty-oplzz/-/asset_publisher/OvxsQYRpZsom/content/prilezitost-pro-mlade-do-30-let?inheritRedirect=false

Karlovy Vary Region

- Vocational practice for young people under 30 in Karlovy Vary Region (*Odborné praxe pro mladé do 30 let v Karlovarském kraji*)
 - Managing authority: Labour Office of the Czech Republic
 - https://www.esfcr.cz/projekty-oplzz/-/asset_publisher/OvxsQYRpZsom/content/odborne-praxe-pro-mlade-do-30-let-v-karlovarskem-kraji?inheritRedirect=false
- Generational Tandem - Supporting Generational Exchange in the Karlovy Vary Region (*Generační tandem – podpora generační výměny v Karlovarském kraji*)
 - Managing authority: Labour Office of the Czech Republic, regional branch in Karlovy Vary
 - https://www.esfcr.cz/projekty-oplzz/-/asset_publisher/OvxsQYRpZsom/content/generacni-tandem-podpora-generacni-vymeny-v-karlovarskem-kraji?inheritRedirect=false
- Youth Employment Support Initiative for the NUTS 2 North-West region in the Karlovy Vary Region (*Iniciativa podpory zaměstnanosti mládeže pro region NUTS 2 Severozápad v Karlovarském kraji*)
 - Managing authority: Labour Office of the Czech Republic
 - https://www.esfcr.cz/projekty-opz/-/asset_publisher/ODuZumtPTtTa/content/iniciativa-podpory-zamestnanosti-mladeze-pro-region-nuts-2-severozapad-v-karlovarskem-kraji?inheritRedirect=false
- A new beginning in the Karlovy Vary Region (*Nový začátek v Karlovarském kraji*)
 - Managing authority: Labour Office of the Czech Republic
 - <https://esf2014.esfcr.cz/PublicPortal/Views/Projekty/Public/ProjektDetailPublicPage.aspx?action=get&datovySkladId=B634C137-45C2-4D18-A26A-598F59AF5497>
- Opportunities for young people in the Karlovy Vary Region (*Šance pro mladé v Karlovarském kraji*)
 - Managing authority: Labour Office of the Czech Republic
 - https://www.esfcr.cz/projekty-oplzz/-/asset_publisher/OvxsQYRpZsom/content/sance-pro-mlade-v-karlovarskem-kraji?inheritRedirect=false

Moravian-Silesian Region

- Vocational practice for young people under 30 in Moravian-Silesian Region (*Odborné praxe pro mladé do 30 let v Moravskoslezském kraji*)
 - Managing authority: Labour Office of the Czech Republic, regional branch in Ostrava
 - https://www.esfcr.cz/projekty-oplzz/-/asset_publisher/0vxsQYRpZsom/content/odborne-praxe-pro-mlade-do-30-let-v-moravskoslezskem-kraji?inheritRedirect=false
- Initiative to support youth employment in the Moravian-Silesian Region (*Iniciativa na podporu zaměstnanosti mládeže v MSK*)
 - Managing authority: Moravian-Silesian Region
 - https://www.esfcr.cz/detail-clanku/-/asset_publisher/BBFAoaudKGfE/content/iniciativa-na-podporu-zamestnanosti-mladeze-v-msk?inheritRedirect=false

Pardubice Region

- Vocational practice for young people under 30 in Pardubice Region (*Odborné praxe pro mladé do 30 let v Pardubickém kraji*)
 - Managing authority: Labour Office of the Czech Republic, regional branch in Pardubice
 - https://www.esfcr.cz/projekty-oplzz/-/asset_publisher/0vxsQYRpZsom/content/odborne-praxe-pro-mlade-do-30-let-v-pardubickem-kraji?inheritRedirect=false
- Training company in the Pardubice Region (*Cvičná firma v Pardubickém kraji*)
 - Managing authority: Labour Office of the Czech Republic
 - https://www.esfcr.cz/detail-clanku/-/asset_publisher/BBFAoaudKGfE/content/cvicna-firma-v-pardubickem-kraji?inheritRedirect=false

Central Bohemia Region

- Generational Tandem - Supporting Generational Exchange in the Central Bohemian Region II (*Generační tandem - podpora generační výměny ve Středočeském kraji II*)
 - Managing authority: Labour Office of the Czech Republic
 - https://www.esfcr.cz/detail-clanku/-/asset_publisher/BBFAoaudKGfE/content/generacni-tandem-podpora-generacni-vymeny-ve-stredoceskem-kraji-ii?inheritRedirect=false
- Vocational practice for young people under 30 in the Central Bohemia Region (*Odborné praxe pro mladé do 30 let ve Středočeském kraji*)
 - Managing authority: Labour Office - Regional branch in Příbram
 - https://www.esfcr.cz/projekty-oplzz/-/asset_publisher/0vxsQYRpZsom/content/odborne-praxe-pro-mlade-do-30-let-ve-stredoceskem-kraji?inheritRedirect=false
- Guarantees for young people in the Central Bohemian Region (*Záruky pro mladé ve Středočeském kraji*)
 - Managing authority: Labour Office - Regional branch in Příbram

- https://www.esfcr.cz/detail-clanku/-/asset_publisher/BBFAoaudKGfE/content/zaruky-pro-mlade-ve-stredoceskem-kraji?inheritRedirect=false

Ústí nad Labem Region

- Vocational practice for young people under 30 in Ústí nad Labem region (*Odborné praxe pro mladé do 30 let v Ústeckém kraji*)
 - Managing authority: Labour Office of the Czech Republic
 - https://www.esfcr.cz/projekty-oplzz/-/asset_publisher/0vxsQYRpZsom/content/odborne-praxe-pro-mlade-do-30-let-v-usteckem-kraji?inheritRedirect=false
- Youth Employment Support Initiative for the NUTS 2 North-West region of Ústí nad Labem (*Iniciativa podpory zaměstnanosti mládeže pro region NUTS 2 Severozápad v Ústeckém kraji*)
 - Managing authority: Labour Office of the Czech Republic
 - https://www.esfcr.cz/projekty-opz/-/asset_publisher/ODuZumtPTtTa/content/iniciativa-podpory-zamestnanosti-mladeze-pro-region-nuts-2-severozapad-v-usteckem-kraji?inheritRedirect=false
- Comprehensive programme of support for young people on the labour market in the Ústí nad Labem Region – TRANSFER (*Komplexní program podpory mladých lidí na trhu práce v Ústeckém kraji – TRANSFER*)
 - Managing authority: Ústí nad Labem Region
 - https://www.esfcr.cz/projekty-opz/-/asset_publisher/ODuZumtPTtTa/content/komplexni-program-podpory-mladych-lidi-na-trhu-prace-v-usteckem-kraji-transfer?inheritRedirect=false
- Programme of support for young people on the labour market in the region of Děčín and Šluknov foothills – CESTA (*Program podpory mladých lidí na trhu práce v regionu Děčínska a Šluknovského výběžku – CESTA*)
 - Managing authority: Ústí nad Labem Region
 - <https://esf2014.esfcr.cz/PublicPortal/Views/Projekty/Public/ProjektDetailPublicPage.aspx?action=get&datovySkladId=613B4AE7-6C48-4BB2-AEEC-5BFDBA0A0879>

More regions at the same time

- INITIATIVE to support young jobseekers (*INICIATIVA na podporu mladých uchazečů o zaměstnání*)
 - Managing authority: Labour Office of the Czech Republic
 - https://www.esfcr.cz/detail-clanku/-/asset_publisher/BBFAoaudKGfE/content/iniciativa-na-podporu-mladych-uchazecu-o-zamestnani?inheritRedirect=false
- Young deaf people working (Mladí neslyšící pracují)
 - Managing authority: Tichý svět - protected workplaces, o.p.s.
 - https://www.esfcr.cz/projekty-opz/-/asset_publisher/ODuZumtPTtTa/content/mladi-neslysici-pracuji?inheritRedirect=false

- Call for young people (*Výzva pro mladé*)
 - Managing authority: Polytechna Consulting, a.s.
 - https://www.esfcr.cz/projekty-opz/-/asset_publisher/ODuZumtPTtTa/content/vyzva-pro-mlade?inheritRedirect=false

3. Focus of initiatives/programmes

3.1 Typology of initiatives/programmes and their supported activities

The support system for 25+ NEETs in the Czech Republic can be described quite simply. This description is based on the research team's knowledge, which may not have revealed all the different components of the system so far, but it certainly captures the main features. The main programmes of support for the target group under study are 'Vocational training for young people under 30 years old' (implemented in all regions of the Czech Republic) and the follow-up 'The Youth Guarantee' (implemented in all regions of the Czech Republic). These programmes build on each other on the timeline. They are programmes to support young people under 30 years of age who have problems to find and keep a job in the labour market and are registered as jobseekers with the Labour Offices in the Czech Republic. The previous youth support programmes only targeted people under 25 years of age. The 25-30 group was only added to these programmes. The supported activities in these programmes are mainly the following: education, training, training jobs, support for creating own businesses and consultancy.

A specific feature of the Czech Republic is the presence of the so-called 'coal regions', whose problems are described above. In these regions, additional support for young people is concentrated. In some cases, there are even initiatives aimed directly at 25+NEETs, which is mainly due to the specific labour market situation in these regions. These are the regions of Karlovy Vary, Ústí nad Labem and Moravian-Silesian. For the Karlovy Vary and Ústí nad Labem regions, there is the Youth Employment Support Initiative for the NUTS-2 North-West region, and the Youth Employment Support Initiative is implemented in the Moravian-Silesian region. The supported activities in these programmes are mainly the following: education, training, training jobs, consultancy, and internships abroad.

The absence of psychological support is considered to be inappropriate, as the 25+NEETs group is a generation that may experience many psychological turbulences in their lives. This is due to many factors. For example, their generation begins the more intense emotional and psychological reflex. At the same time, it is a more sensitive and self-centred generation (iROZHLAS, 2022). The absence of other activities is not so trivial and is often complemented by other activities of other entities (NGOs, municipal/local, private companies).

Evaluation of activities in the Czech Republic is ongoing. However, in most cases, one huge evaluation report is created, consisting of evaluations of several activities. For example, the YEI evaluation evaluates all activities aimed at young people at the same time. Other evaluations are similarly designed. The mapping of initiatives in the Czech Republic revealed increasing number of evaluations, their scope and quality over time.

3.2 Geographic coverage of NEETs support

Despite the fact that youth unemployment is not as serious issue in the Czech Republic, there are several initiatives to support this group. Some forms of support for 25+ NEETs take place on the national level. These are the aforementioned national youth support programmes.

However, stronger support for youth unemployed is targeted in the ‘coal regions’, where more activities (and funding) are concentrated. Coal regions are the territory of three Czech NUTS-3 regions which are facing serious socio-economic problems due to the process of transformation to a climate-neutral economy. In addition to supporting for youth, the support is mainly aimed at creating new jobs, helping workers to move to other sectors and restoring areas after mining or in related industries in these regions.

National youth support programmes are focused on NEETs up to 30 years of age, while the situation is similar in the coal regions.

4. Financial aspects of initiatives and programmes

The main source of funding for all identified activities targeting 25+ NEETS (but in most cases not only for them) are EU funds, especially the European Social Fund. Some projects are also co-financed by the state budget. Regional/local funding is not reflected in the identified projects. The budgets allocated for the initiatives are shown in Table 1.

For none of the identified projects, the research team was able to find out what part of the funding was directly allocated to 25+ NEETs, so we cannot provide this data.

Table 1. Funding of initiatives

<i>Name of initiative</i>	Allocation in EUR	Source of financing		
		EU	National	Regional/local
Housing First	6,000,000	X	X	
A coordinated approach to socially excluded localities	10,333,897	X	X	
International mobility and social inclusion of disadvantaged youth	4,040,000	X	X	

International mobility for disadvantaged youth	4,800,000	X	X	
Apprenticeships for young people under 30	73,200,000	X		
New job opportunities	160,440,000	X	X	
Educate yourself for growth! – job opportunities	480,000,000	X		
The Youth Guarantee	56 000 000	X		
Opportunity for young people under 30	1,720,937.18	X		
Youth Employment Support Initiative for the NUTS 2 North-West region in the Karlovy Vary Region	5,756,859.60	X		
A new beginning in the Karlovy Vary Region	1,247,434.45	X		
Opportunities for young people in the Karlovy Vary Region	934,726.43	X		
Initiative to support youth employment in the Moravian-Silesian Region	935,060.91	X		
Training company in the Pardubice Region	408,176.53	X		
Generational Tandem – Supporting Generational Exchange in the Central Bohemian Region II	2,586,478.08	X		
Vocational practice for young people under 30 in the Central Bohemia Region	3,895,572.90	X		
Guarantees for young people in the Central Bohemian Region	5,267,438.51	X		
Youth Employment Support Initiative for the NUTS 2 North-West region of Ústí nad Labem	20,180,307.38	X		
Comprehensive programme of support for young people on the labour market in the Ústí nad Labem Region – TRANSFER	4,034,808.15	X	X	
Programme of support for young people on the labour market in the region of Děčín and Šluknov foothills – CESTA	961,532.59	X	X	
INITIATIVE to support young jobseekers	1,680,872.46	X	X	
Young deaf people working	84,418.77	X	X	
Call for young people	253,637.02	X		
Generational Tandem – Supporting Generational Exchange in the Karlovy Vary Region	609,015	X		

Data source: Internal templates

5. Implementation of initiatives and programmes

5.1 Project implementers

Table 2. Implementing agencies

<i>Name of initiative</i>	<i>Name of the implementer</i>	<i>Number of implemented projects</i>	<i>Degree of reflection of NEETs in the given programme</i>	<i>Period of implementation</i>
Housing First	MoSLA	13	25+NEETs are just part of target group	1/2019–6/2022
A coordinated approach to socially excluded localities	MoSLA	38	25+NEETs are just part of target group	9/2015–6/2020
International mobility and social inclusion of disadvantaged youth	MoSLA	14	25+NEETs are just part of target group	2/2019–6/2022
International mobility for disadvantaged youth	MoSLA	17	25+NEETs are just part of target group	11/2015–12/2018
Apprenticeships for young people under 30	MoSLA	14	25+NEETs are just part of target group	7/ 2013–11/2015
New job opportunities	MoSLA	14	25+NEETs are just part of target group	4/2015–3/2019
Educate yourself for growth! - job opportunities	MoSLA	n.a	25+NEETs are just part of target group	1/2012–12/2015
The Youth Guarantee	MoSLA Implementor: Labour Office	13	25+NEETs are just part of target group	12/2015–5/2023

Opportunity for young people under 30	Labour Office of the Czech Republic	n.a	25+NEETs are just part of target group	1. 7. 2013-31. 8. 2015 (slightly differs in every region)
Youth Employment Support Initiative for the NUTS 2 North-West region in the Karlovy Vary Region	Labour Office of the Czech Republic	n.a	25+NEETs are just part of target group	1. 12. 2015-31. 5. 2019
A new beginning in the Karlovy Vary Region	Labour Office of the Czech Republic	n.a	25+NEETs are just part of target group	1. 6. 2012-31. 5. 2015
Opportunities for young people in the Karlovy Vary Region	Labour Office of the Czech Republic	n.a	25+NEETs are just part of target group	1. 8. 2011-31. 7. 2014
Initiative to support youth employment in the Moravian-Silesian Region	Moravian-Silesian Region	n.a	25+NEETs are just part of target group	1. 7. 2018-31. 10. 2019
Training company in the Pardubice Region	Labour Office of the Czech Republic	n.a	25+NEETs are just part of target group	1. 5. 2017-30. 6. 2022
Generational Tandem - Supporting Generational Exchange in the Central Bohemian Region II	Labour Office of the Czech Republic	n.a	25+NEETs are just part of target group	1. 1. 2016-30. 4. 2023
Vocational practice for young people under 30 in the Central Bohemia Region	Labour Office - Regional office in Příbram	n.a	25+NEETs are just part of target group	1. 7. 2013-31. 8. 2015
Guarantees for young people in the Central Bohemian Region	Labour Office - Regional office in Příbram	n.a	25+NEETs are just part of target group	1. 1. 2016-31. 5. 2023
Youth Employment Support Initiative for the NUTS 2 North-West region of Ústí nad Labem	Labour Office of the Czech Republic	n.a	25+NEETs are just part of target group	1. 11. 2015-31. 7. 2019
Comprehensive programme of support for young people on the labour market in the Ústí nad Labem Region - TRANSFER	Ústí nad Labem Region	n.a	25+NEETs are just part of target group	1. 6. 2016-31. 12. 2018

Programme of support for young people on the labour market in the region of Děčín and Šluknov foothills - CESTA	Ústí nad Labem Region	n.a	25+NEETs are just part of target group	1. 6. 2016-31. 12. 2018
INITIATIVE to support young jobseekers	Labour Office of the Czech Republic	n.a	25+NEETs are just part of target group	1. 1. 2020-31. 10. 2022
Young deaf people working	Tichý svět - protected workplaces, o.p.s.	n.a	25+NEETs are just part of target group	1. 9. 2017-18. 4. 2018
Call for young people	Polytechna Consulting, a.s.	n.a	25+NEETs are just part of target group	1. 5. 2016-28. 2. 2018
Generational Tandem - Supporting Generational Exchange in the Karlovy Vary Region	Labour Office, Karlovy Vary branch	n.a	25+NEETs are just part of target group	1. 4. 2014-31. 10. 2015

Data source: Internal templates

5.2 Target groups of NEETs

Table 3. Target group of programmes

<i>Name of initiative</i>	<i>Target group</i>	<i>Number of supported persons in the target group</i>	<i>Degree of reflection of NEETs in the given programme</i>	<i>Period of implementation</i>
Housing First	The target group is households in housing need with intensive support needs, preferably the most vulnerable with complex support needs.	255 housings	25+NEETs are just part of target group	1/2019–6/2022
A coordinated approach to socially excluded localities	The supported target groups are persons socially excluded or at risk of social exclusion and national minorities (especially Roma) living in areas identified as socially excluded localities	230	25+NEETs are just part of target group	9/2015–6/2020
International mobility and social inclusion of disadvantaged youth	15-30 (4 conditions on education, disability or long-term inactivity)	400	25+NEETs are just part of target group	2/2019–6/2022
International mobility for disadvantaged youth	15-30 (4 conditions on qualification, long-term registration at the Labour Office, ethnicity and disabilities)	400	25+NEETs are just part of target group	11/2015–12/2018
Apprenticeships for young people under 30	Youth people up to 30 years (condition on minimally 4 months registration at the Labour Office, lacking work experience)	10 979 (not final number)	25+NEETs are just part of target group	7/2013–11/2015
New job opportunities	Job seekers to whom the Labour Office of the Czech Republic pays special attention during job placement (disadvantaged by health, age, etc.).	32 176	25+NEETs are just part of target group	4/2015–3/2019

Educate yourself for growth! - job opportunities	Young people under 30 - jobseekers	136 235	25+NEETs are just part of target group	1/2012– 12/2015
The Youth Guarantee	young unemployed people up to 29 years of age	14 514	25+NEETs are just part of target group	12/2015– 5/2023
Opportunity for young people under 30	Young people aged 18-30 who have not acquired significant work experience and are registered as jobseekers at the Labour Office	n.a	25+NEETs are just part of target group	1.7.2013– 31.8.2015 (slightly differs in every region)
Youth Employment Support Initiative for the NUTS 2 North-West region in the Karlovy Vary Region	People under 30 who are not in employment, education or training	746	25+NEETs are just part of target group	1.12.2015– 31.5.2019
A new beginning in the Karlovy Vary Region	Persons with a registration at the Labour Office of the Czech Republic for more than 5 months or with need for special assistance	260 (planned)	25+NEETs are just part of target group	1.6.2012– 31.5.2015
Opportunities for young people in the Karlovy Vary Region	Jobseekers under 30 who have been registered at the Labour Office of the Czech Republic in the Karlovy Vary Region for more than 5 months (and another specifics)	102	25+NEETs are just part of target group	1. 8. 2011-31. 7. 2014
Initiative to support youth employment in the Moravian-Silesian Region	People under 30 years of age who are not in employment, education or vocational training	128	25+NEETs are just part of target group	1. 7. 2018-31. 10. 2019
Training company in the Pardubice Region	Persons with cumulative handicaps in the labour market, Jobseekers	n.a	25+NEETs are just part of target group	1. 5. 2017-30. 6. 2022

Generational Tandem - Supporting Generational Exchange in the Central Bohemian Region II	Jobseekers and employees of pre-retirement age	n.a	25+NEETs are just part of target group	1. 1. 2016-30. 4. 2023
Vocational practice for young people under 30 in the Central Bohemia Region	Jobseekers aged up to and including 30 years, regardless of the level of education attained, registered at the Labour Office of the Czech Republic for more than 4 months	240 (planned)	25+NEETs are just part of target group	1. 7. 2013-31. 8. 2015
Guarantees for young people in the Central Bohemian Region	Jobseekers—age to 29 years old	n.a	25+NEETs are just part of target group	1. 1. 2016-31. 5. 2023
Youth Employment Support Initiative for the NUTS 2 North-West region of Ústí nad Labem	People under 30 who are not in employment, education or training	3 314	25+NEETs are just part of target group	1. 11. 2015-31. 7. 2019
Comprehensive programme of support for young people on the labour market in the Ústí nad Labem Region - TRANSFER	People under 30 who are not unemployment, education or training	1 122	25+NEETs are just part of target group	1. 6. 2016-31. 12. 2018
Programme of support for young people on the labour market in the region of Děčín and Šluknov foothills - CESTA	People under 30 who are not unemployment, education or training	260	25+NEETs are just part of target group	1. 6. 2016-31. 12. 2018
INITIATIVE to support young jobseekers	People under 30 who are not unemployment, education or training	314	25+NEETs are just part of target group	1. 1. 2020-31. 10. 2022
Young deaf people working	People under 30 who are deaf and not unemployment, education or training	10 (planned)	25+NEETs are just part of target group	1. 9. 2017-18. 4. 2018
Call for young people	Disadvantaged youth for international mobility	30	25+NEETs are just part of target group	1. 5. 2016-28. 2. 2018
Generational Tandem - Supporting Generational Exchange in the Karlovy Vary Region	jobseekers entering the labour market without work experience or with interrupted work experience due to parental	37 jobseekers (here 25+ NEETs) and 37 employees of	25+NEETs are just part of target group	1. 4. 2014-31. 10. 2015

	leave or caring for a person dependent on the help of another natural person and current employees of the company at pre-retirement age	pre-retirement age		
--	---	--------------------	--	--

Data source: Internal templates

6. Conclusions

The situation of 25+ NEETs in the Czech Republic is not dramatic compared to other EU countries. Nevertheless, many activities in the Czech Republic focus on this group, although in most cases, only partially. The group of people aged 25-29 is more often associated with young people in support activities than with the unemployed in general.

The activities supported by the initiatives follow traditional approaches to supporting unemployed people. No reflection on the specificities of the 25+ NEETs group is observed.

The territorial coverage of activities makes sense in the context of the socio-economic situation in the regions. Support is across the board and is reinforced in the so-called 'coal regions', which are undergoing a major transition and where unemployment levels are higher than in the rest of the country.

In the context of unemployment support, resources are generally spent proportionately on supporting young people. Funding for youth support activities comes mainly from the EU, specifically from the ESF. Some initiatives/programmes are then partly co-financed by the state budget.

The most important managing bodies and implementers are the Ministry of Labour and Social Affairs, its Labour Office, and its regional branches. These institutions play a key role in the Czech Republic in the field of social support for the population.

25+ NEETs are not the target group in most activities but are part of a wider group. Mostly part of young people under 29 or 30 years of age. In some cases, they are part of groups of otherwise disadvantaged or generally unemployed people.

7. References

Database - Eurostat. European Commission [online]. Retrievable from: <https://ec.europa.eu/eurostat/web/main/data/database>

DotaceEU - Uhelné regiony. [online]. Copyright ©2022 Ministerstvo pro místní rozvoj ČR, všechna práva vyhrazena [cit. 21.09.2022]. Retrievable from: <https://www.dotaceeu.cz/cs/evropske-fondy-v-nbsp;cr/programove-obdobi-2021-2027/uhelne-regiony>

Maternity leave and parental allowance | EURAXESS Czech Republic. EURAXESS Czech Republic | [online]. Retrievable from: <https://www.euraxess.cz/czech-republic/information-assistance/childrenfamily-and-personal-life/maternity-leave-and-parental>

Po mileniálech přicházejí sněhové vločky. Přehnaně citlivá a sebestředná generace | iROZHLAS - spolehlivé zprávy. iROZHLAS - spolehlivé a rychlé zprávy [online]. Copyright © 1997 [cit. 21.09.2022]. Retrievable from: https://www.irozhlas.cz/zivotni-styl/spolecnost/milenialove-snehove-vlocky-generace-mladi-teenageri-studenti-spolecnost_1711202300_ber

Statistics on young people neither in employment nor in education or training - Statistics Explained. [online]. Retrievable from: https://ec.europa.eu/eurostat/statistics-explained/index.php?title=Statistics_on_young_people_neither_in_employment_nor_in_education_or_training